



the
Shetland Breed

the newsletter of the Shetland Sheep Society

April/May 2008 £2



Wharnccliffe Heath



moorit with newborn lamb

Wharnccliffe Heath LNR is owned by the Forestry Commission and managed by a partnership between FC and Wharnccliffe Heathlands Trust. It is managed to improve the condition of the existing heathland and to expand the areas of heath over time. Grazing is necessary to control the growth of trees and bracken. We are using traditional native breeds of sheep and cattle that are thrifty, hardy and well suited to this site.

Over 40 Shetlands were introduced to help expand the heathland into Wharnccliffe Wood, almost doubling the existing area of heath. Shetlands were judged to be ideal for the job, as "like Yorkshire folk, they are independent and don't take too much looking after."

The work is being funded by the Forestry Commission and the **Coalfield Heathland Project**, as part of a successful lottery bid by the Sheffield Wildlife Trust.

The reserve can be reached either by a footpath starting next to the bridge over the R. Don on Station Road, Deepcar SK 292981, or from the Trans-Pennine Trail, which runs adjacent to the reserve. A number of footpaths dissect the reserve. *"Sheffield Star"*



Yorkshire tyke meets "yorkshire" shetland

Super Sheep! Meet the Animals!

The **Coalfield Heathland project** is using rare breed livestock to for conservation grazing. Come and see these lovely animals and find out how they are helping to protect heath and grassland habitats.

Sunday 18th May 11am to 1pm

Haw Park Wood, Wakefield.

Meet at entrance on Haw Park Lane. SE 369 153

Wednesday 28th May 11am to 1pm

Keppel's Field, Rotherham

Meet at Keppel's Column off Admiral's Crest SK 389 947

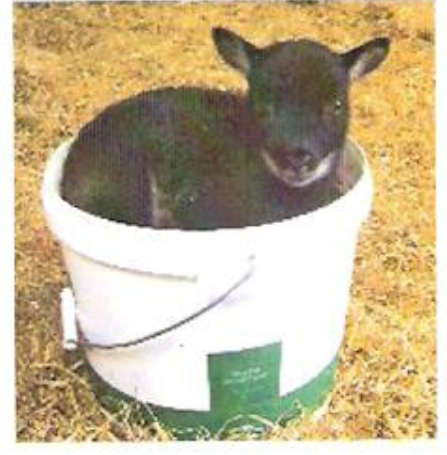
These dates may change please call before attending. phone on 0114 279 2667 for more details and for bookings

LAMB GALLERY



Splash the 'reject'

Sue Russo



portalamb

Carole Fewings



Mabel & her ewe lamb

Sue Russo

Toffee with newborn lambs quiet

time John Knaption

